



GLOBAL CONTROL 2.0

Globally Developed for Worldwide Use

GLOBAL CONTROL 2.0 ADVANCED TECHNOLOGY, HIGH RELIABILITY, EASY TO USE, AND COMPACT.

The Global Control 2.0 is the newest edition to Messer's Global Control family. With it, the operation of the MetalMaster 2.0 is easy to use. The operator interface is very clearly laid out with easy to understand symbols, photos, graphics with a Microsoft tree structure.

An extensive custom shape library, multiple process databases, CAD import, true-shape nesting, productivity monitoring and remote diagnostics are just some of the key features packaged in the industry's only IP67 rated enclosure. Easy to learn functions allow new employees to become expert operators in minutes.

Global Control 2.0 reacts quickly and accurately to your input. Simply enter your commands via touch screen. You are only three clicks away from loading the part program to being ready to cut, now that is "fast cutting".



(More information on back)

GLOBAL CONTROL 2.0

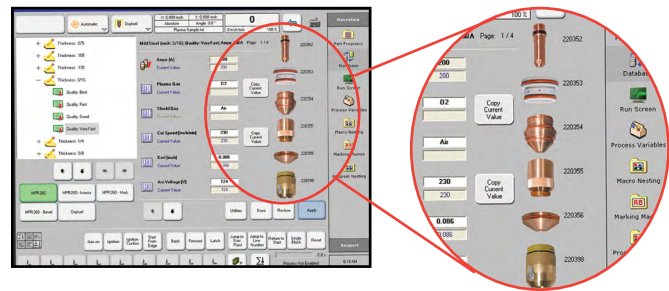
TECHNICAL GUIDE

TECHNICAL DATA

Operating System	MS Windows® 10 IoT Enterprise 2016 LTSB	Ethernet Network	10/100/1000 Mbps
Display	15" LED Color Touch Screen	Ambient Temperature	32°F - 122°C F (0°C - 50°C)
Processor	Intel® Celeron™ ULV 827E 1.4GHz	Inputs/Outputs	Over 100,000 I/O via real-time EtherCAT Bus System
Hard Drive	40 GB Cfast card, 3D Flash	USB Ports	Two (2) USB Ports
Environment	IP67 (No ingress of dust and water resistant)		

FEATURES AND BENEFITS

- Multiple process databases make every operator an expert.
- Modern graphical interface minimizes the learning curve.
- Industrial CNC computer with integrated PLC and motion control eliminates expensive proprietary cards while providing high performance and reliability.
- Ethernet-based I/O system (EtherCAT) provides real-time updates with minimal cables hardened against RF noise.
- Downtime is minimized operators can be easily trained using our Virtual Service™ remote diagnostic software.
- True shape nesting and direct import of CAD files allow parts to be cut quickly with minimal scrap.
- Over 50+ shapes come standard and additional custom shapes can be created by the user.



Cutting parameter database (plasma /oxyfuel) with display of consumables makes process set-up quick and error-free.

APPLICATION

Featured on MetalMaster 2.0.

Messer Cutting Systems, Inc.
W141 N9427 Fountain Boulevard
Menomonee Falls, WI 53051
Phone: 262-255-5520
Fax: 262-255-5170
sales.us@messer-cutting.com
www.messer-cutting.com