

TELESIS® PINSTAMP®

Telesis® Pinstamp® marking system uses a reciprocating stylus that permanently indents alphanumeric characters or lines on a variety of material types such as mild steel, stainless steel and aluminum. (Note: Powder paint will typically cover the marked line or text.)

FEATURES AND BENEFITS

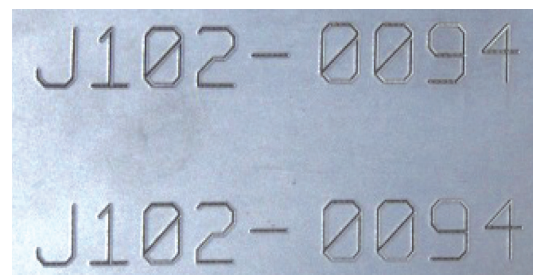
- Marking visible after wet painting or surface treatment.
- TMP3200 depth from .001" to .010" (.0254mm to .254mm).
- TMP7000 depth from .001" to .015" (.0254mm to .381mm).
- Marking time depends on marking depth and size of characters.
- Marking lines are also used for layout.
- Character height is typically .25" to 1"

SYSTEM DESCRIPTION

The Telesis® Pinstamp® uses a hardened pin and is pneumatically accelerated to indent dot matrix alphanumeric characters. The size and location of characters is embedded in the CNC part program. The marking head moves the pin cartridge through the X and Y-Axis to reach the correct position for each dot of the character being marked. Automatic height sensing is included.

APPLICATION

Available on the MetalMaster Evolution, MetalMaster Xcel, Titan III, MPC2000, MPC2000 MC, TMC4500 DB, and SicoMat® machine models.



Marking examples.



Scan to watch video.

Messer Cutting Systems, Inc.
W141 N9427 Fountain Boulevard
Menomonee Falls, WI 53051
Phone: 262-255-5520
Fax: 262-255-5170
sales.us@messer-cutting.com
www.messer-cutting.com