

HOW TO GET
THE MOST OUT OF YOUR
**CNC PLASMA
CUTTING
MACHINES**

WITH **SKILLED EMPLOYEES**



EXAMINING THE NEED FOR TRAINING FUTURE EMPLOYEES IN THE PLASMA CUTTING MANUFACTURING TRADE

The manufacturing industry offers competitive and high wages to kick start a career, and working for a company that develops complex, robust tools, such as CNC (Computer Numerical Control) plasma cutting machines requires in-depth training.

Applications vary and techniques change over time, making it all the more crucial to have fully trained machinists and technicians servicing this type of manufacturing equipment.

FINDING THE IDEAL CANDIDATE

THE IDEAL CANDIDATE COULD BE RIGHT UNDER YOUR NOSE!

CURRENT EMPLOYEES



Started on the shop floor and are looking to expand their skill set.

FUTURE EMPLOYEES



In-house training programs provide industry-specific instructions.

DEVELOPING EMPLOYEES



A willingness to grow within the company and make a career out of it.

With limited qualified training programs for CNC plasma cutting, it becomes increasingly difficult to find an ideal candidate for your company. You must be very competitive and offer additional incentives such as tuition reimbursement and a chance to travel, with great pay.

WHAT SKILLS DO PROSPECTIVE EMPLOYEES NEED?



- ✓ Understand a variety of thermal cutting methods



- ✓ Program CAD (Computer Automated Design) software



- ✓ Set up and operate a plasma system efficiently



- ✓ Exposure to more advanced welding technologies



- ✓ Demonstrate proper plasma safety procedures

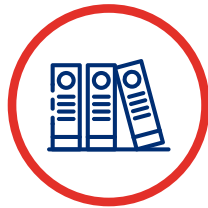


- ✓ A willingness to work with tools and mechanical equipment

TRAINING AVAILABLE PRIOR TO ENTERING THE WORKFORCE

Priorities for technical education in high schools and colleges are evolving, and not all curriculums offer hands-on training.

CALIFORNIA HIGH SCHOOLS



Students focus on theory rather than applied skills

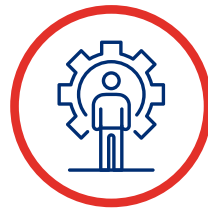


Some manufacturers even partner with colleges to align students with current positions open in the manufacturing industry

STATE OF WISCONSIN



There are technical colleges that offer welding and shop classes



Most students get a feel for the manufacturing environment through facility tours and internships

For manufacturers, these students are in high demand, and there are not enough people to fill manufacturing trade positions. Student recruitment for employers is a competitive marketplace. Coupled with a defined trade like CNC plasma cutting, training is available but scarce, because there are not enough manufacturers who offer this type of training.

THE TYPES OF TRAINING FOR THE MANUFACTURE OF PLASMA CUTTING EQUIPMENT ARE



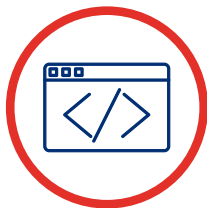
**CAREER & TECHNICAL
EDUCATION (CTE) IN
HIGH SCHOOLS**



**LEARN THE BASICS
OF CNC PLASMA
CUTTING**



Operation and set
up procedures



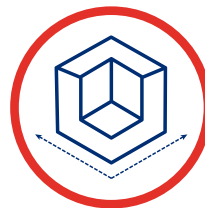
Geometry creation
and programming



**CERTIFICATE AND
DEGREE PROGRAMS AT
COMMUNITY COLLEGES**



**LEARN SKILLS
THROUGH THE USE OF A
CNC PLASMA CUTTER**



Learn metal design
and fabrication using
CAD



Create metal art, and
industry specific metal
fabricated products

OFFERING IN-HOUSE TRAINING

Meeting the demand for high quality and productivity in your company is crucial. Even the manufacturer of the best cutting machines will produce more efficiently when operated by skilled staff. For this reason, it is important to offer in-house training to future and current employees.

CURRENT EMPLOYEES



Exchange of expertise between staff and instructors



Expansion of previous skill sets

NEW EMPLOYEES

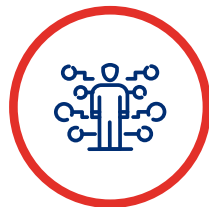


Technical know-how packaged into comprehensive training



Knowledge about factories, equipment, and software

OVERALL



Practical courses with hands-on applications



More productive work-time after training

A successful training program that is tailored to fit every employee's experience and needs will help to maximize your CNC plasma cutting machine's performance.

THE IMPORTANCE OF CNC PLASMA CUTTING TRAINED EMPLOYEES

MANUFACTURER TRAINING

Buying machinery directly from a supplier that offers access to a team of skilled application engineers is one way to receive the benefits of an in-house training program without spending extra money, time, or resources.

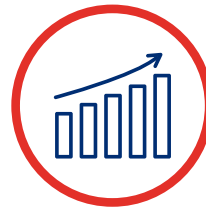
THIS TEAM SHOULD BE ABLE TO PROVIDE



Software training
and programming



Efficient professional
operation of products



Process
development

EXPERT SUPPORT SHOULD ALSO BE ACCESSIBLE IN MULTIPLE WAYS TO ACCOMMODATE YOUR TEAM'S SCHEDULE



REMOTELY

Online and Phone
support



IN-PERSON, HANDS- ON TRAINING:

On new equipment prior to
shipment and installation

Taking advantage of comprehensive training does not have to mean undergoing an extra investment. Find a supplier who can meet your needs and help your company meet its productivity goals.



MESSER 
Cutting Systems

SOURCES

<https://www.forbes.com/sites/tarabrown/2012/05/30/the-death-of-shop-class-and-americas-high-skilled-workforce/#5e71a94b541f>

<https://www.kxro.com/south-bend-students-will-come-to-school-and-find-a-cnc-plasma-cutter/>