



OXYFUEL STATION OUTLET EQUIPMENT GAS REGULATION SYSTEM

Messer Cutting Systems eases customer installation by providing filters, regulators, valves and fittings with “Oxyfuel Station Outlet Equipment” package for all Messer machines.

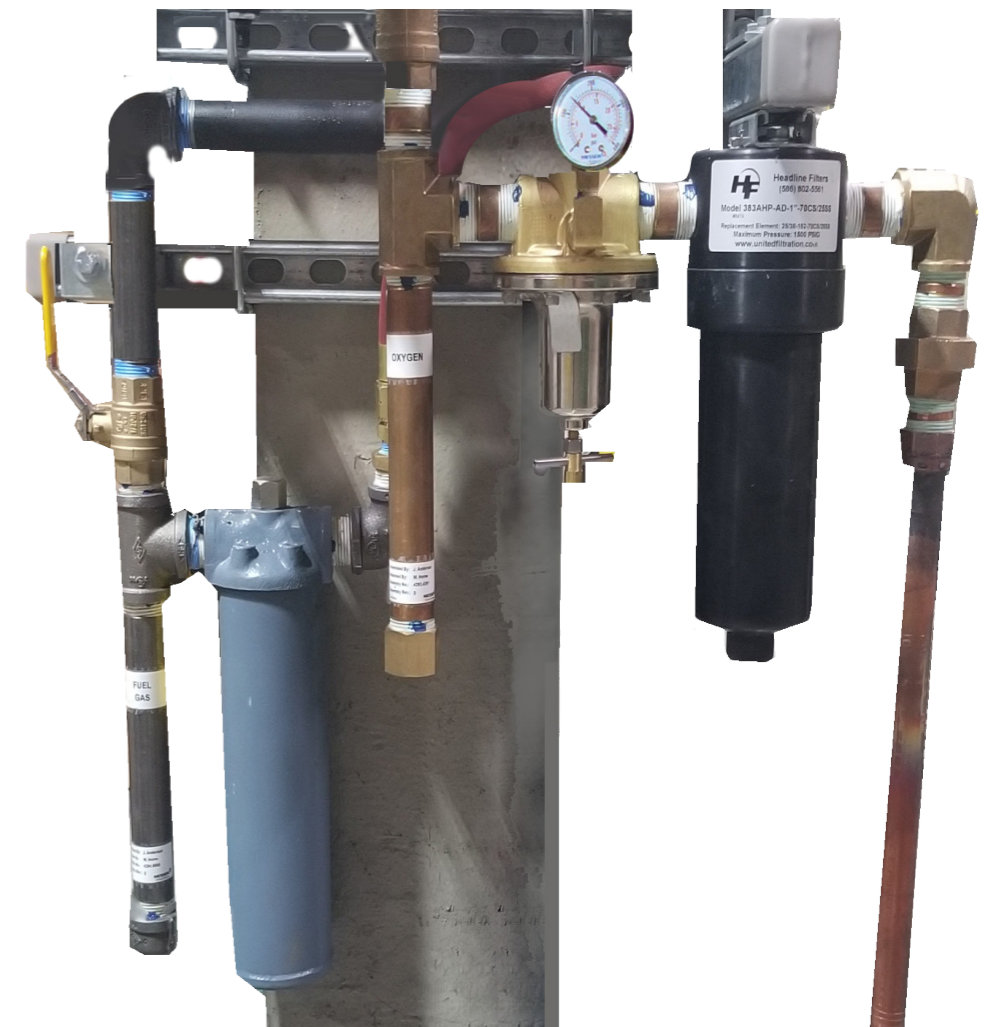
The customer is responsible for the piping to the inlet side of each Station Outlet and it should be mounted close to the longitudinal axis powertrack entry point with appropriate fittings attached to the outlet side to mate with Messer supplied hoses.

SYSTEM DESCRIPTION

The Oxyfuel Station Outlet Equipment provides filters, regulators, and shut-off's for gases used in a given application.

APPLICATION

Station Outlet Equipment is required for all machine installations.



Close-up of typical components provided (mounting hardware by customer).

Messer Cutting Systems, Inc.
W141 N9427 Fountain Boulevard
Menomonee Falls, WI 53051
Phone: 262-255-5520
Fax: 262-255-5170
sales.us@messer-cutting.com
www.messer-cutting.com