

OMNIFAB DIGITAL TRANSFORMATION

The software suite for your Industry 4.0
Messer Experience



MESSER

SOFT

Hello System

Show successfully processed files

Monitor

Q Search

Type	Status	File	Created on ↓
▼ OrderOf	Success	2022-01-0890.xml	01/25/2022 01:27:06
▼ Customer	Success	CU-2022-01-122.xml	01/25/2022 01:25:40
▼ OrderOf	Error	2022-01-0870.xml	01/24/2022 20:30:58
▼ Customer	Success	CU-2022-01-102.xml	01/24/2022 20:30:58
▼ Quotation	Success	B2B_Import-0100.xml	01/24/2022 14:00:52
▼ ProductionRequestOf	Error	PR_Import-0101.xml	01/24/2022 13:54:19
▼ ProductionRequestOf	Error	PR_Import-0284.xml	01/24/2022 13:52:42
▲ OrderOf	Success	2022-01-0715.xml	01/24/2022 13:46:02

Entries for QA-000123

Status	Message
Success	The order 'QA-000123' was imported successfully
Success	The order item 20:PRT-000075 was saved successfully
Success	The order item 10:PRT-000023 was saved successfully
Success	The order item 30:PRT-000076 was saved successfully
Error	The customer with the number '697372356' does not exist

▼ Customer	Success	CU-2022-01-099.xml	01/24/2022 13:26:42
▼ OrderOf	SuccessWithWarning	2022-01-661.xml	01/24/2022 09:54:22

Rows per page: 10

1-10 of 10

<<

>>

CONNECT SYSTEMS AND SOFTWARE

ERP Connect

From designing parts and nesting plans to transmitting those plans to the machine for cutting, OmniFab works hand-in-hand with your ERP system, making all orders flow smoothly through your machines.

With each installation tailored to your unique business and operational requirements, adding OmniFab Connect to your OmniWin or OmniBevel platforms create value throughout your operational and production processes.

OmniFab ERP Connect aligns the data from your ERP system directly to production planning and work preparation. This optimizes the production planning process by providing actionable on-demand data for materials needed for production such as parts, plates, and so much more.

OmniFab ERP Connect transmits your nesting plans and actual production results back to your ERP system from OmniFab PDC, giving you a real-time view of your production metrics.

ERP Connect Service Providers

Sync information to your CRM Programs.



YOUR MACHINES, SOFTWARE
AND ERP-SYSTEMS WORK
"HAND-IN-HAND"



- + Automatic data exchange between ERP system and OmniWin.
- + Includes data about orders, customers, plates, nesting plans, and much more.
- + Easily configurable and customizable interface through custom fields.
- + Interface surveillance with monitoring.

ACTUAL DATA IS AVAILABLE
WHERE YOU NEED IT



- + Production information is available to you digitally.
- + Share this information with all stakeholders in real-time.
- + Up-to-date overview of ongoing processes and their statuses.

ADDITIONAL OMNIFAB OPTIONS

Dashboards and statistics

This option provides an overview of available plates, parts, and current order details and their statuses. Use reliable data from production to identify trends and anomalies so that you can react quickly.

Use the data generated through OmniFab's suite of modules to gain operational insight into all facets of your production.



OmniFab system requirements and features

Hardware requirements

- + Processor with 4 cores.
- + 8 GB RAM, 150 GB hard disk space.
- + Windows Server 2016 (or higher).
- + MS SQL Server 2016 (or higher).
- + **Supported operating systems:**
Linux, Cent OS7 (recommended)
Windows 10 64 Bit
Windows 11 64 Bit
- + **Supported browser:**
Google Chrome (latest stable version)
Firefox (latest stable version)
Microsoft Edge (latest stable version, only Chrome-based).

Requirements for OmniFab PDC on the control

- + Windows 10 recommended.
- + Network connection between control (HMI version 11.14) and OmniFab Server.

Requirements for OmniFab Machine Insight

- + 4-8 GB main memory, depending on expansion level.
- + 120 GB hard disk space.
- + Operating system included in delivery.
- + Network connection to cutting machines and license server.

Due to the large amounts of data and concurrent access via the application, a full SQL server instance is recommended. This must be licensed separately. The SQL Server Express version is not recommended. Please contact support-omnifab@messersoft.com for more detailed system requirements.

MESSER SOFT

Quotations / Edit

Hello System

OVERVIEW

CUSTOMER

NOTES

Cancel

Save

Number *

QA-000064

Eip number

6542148745

Status *

Approved

Created on *

01/05/2022

Binding period *

01/06/2022

Desired date *

01/12/2022

Sent to ERP

01/05/2022

Customer order number *

353215487545

Contact name *

John

Contact type *

Phone

Sales person

007

OVERVIEW

ATTACHMENTS

EDIT

PRODUCTION PLAN

PARAMETERS

NOTES

USAGES

QUOTATION ITEMS

+ Add New

+ Add

Edit	Pos.	Thu...	Geo final	Article No	Qty.	Thickn (mm)	Dimensions (mm)	Net weight (kg)	Total gross weight (kg)	Desired date	Prod. time
	10		<input checked="" type="checkbox"/>	PRT000051	10	10	77.19 x 77.19	0.37	7.87	1/12/2022	00:01:10
	20		<input checked="" type="checkbox"/>	PRT000052	15	10	220.00 x 220.00	3.80	77.55	1/12/2022	00:03:30
	30		<input checked="" type="checkbox"/>	PRT000053	15	10	219.02 x 219.00	2.36	80.97	1/12/2022	00:05:00
Total:					40				166.39		

Items per page

10

1 - 3 of 3 items

CREATE QUOTES

Sales Quotes

A fast and reliable quoting process is a key component in customer satisfaction. The Sales Quote module of OmniFab provides accurate information on parts and processes required for each project, allowing your sales department to provide quick and accurate quotes.

Your sales department can quickly select existing parts or create new parts from part templates for compiling quick and accurate information for quotes. Production times, material weights, and material usage for the cut parts are all calculated through our OmniFab Sales Quote module.

Production can view and adjust further work steps and production parameters, as well as attaching documents like schematics, production plans, and more.

Track the status of any part quotes produced in real-time. Provide your customers with detailed information and order status at any stage.

The OmniFab Sales Quote module was developed to provide an easy way for sales departments to compile the right data and supply that information directly into your ERP and/or CRM systems.

CREATE YOUR QUOTES QUICKLY

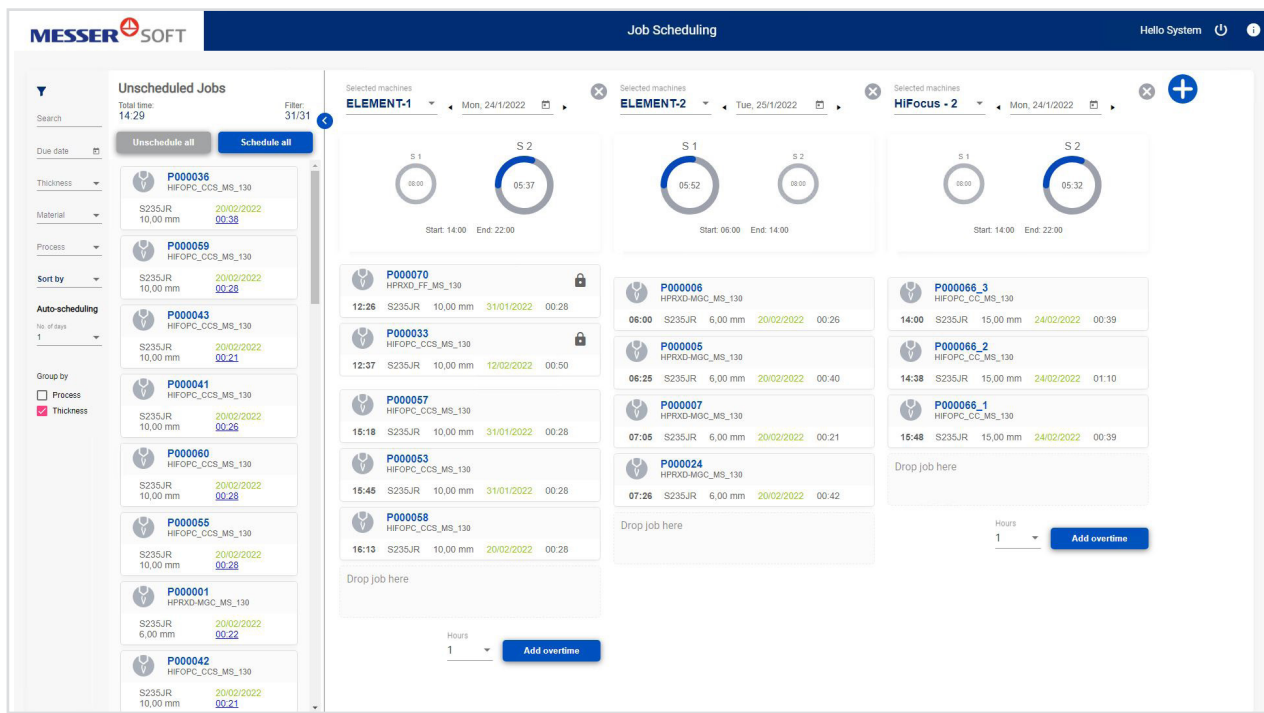


- + All information is available for your ERP or CRM system.
- + Compiles all data required to supply accurate, reliable quotes.
- + Quotes always up-to-date, even if the order changes at a later date.
- + The exchange of data is error-free and loss-free.

OFFER YOUR CUSTOMERS TRANSPARENCY IN THEIR ORDERS AT ANY TIME



- + Save time with automatic transmission.
- + Seamlessly track the status of your quotes from submission to production.
- + Persistent access to all relevant data, including system and process steps.



PLAN PRODUCTION ORDERS

Job Management

Production orders, also called “jobs” in OmniFab, are managed by the OmniFab Job Management module. This powerful module ensures that all jobs along with their nesting information are available at the right time for the right machines.

Processing papers are no longer required as all important information is available digitally within the Job Management module.

For effective job planning, you can filter and sort the jobs by urgency, material, or other important attributes, allowing you to schedule jobs on your machines manually or automatically.

By defining shifts, you get a quick overview of the planned production time and the current shift utilization of each machine.

PLAN YOUR PRODUCTION ORDERS DIGITALLY AND PAPERLESS

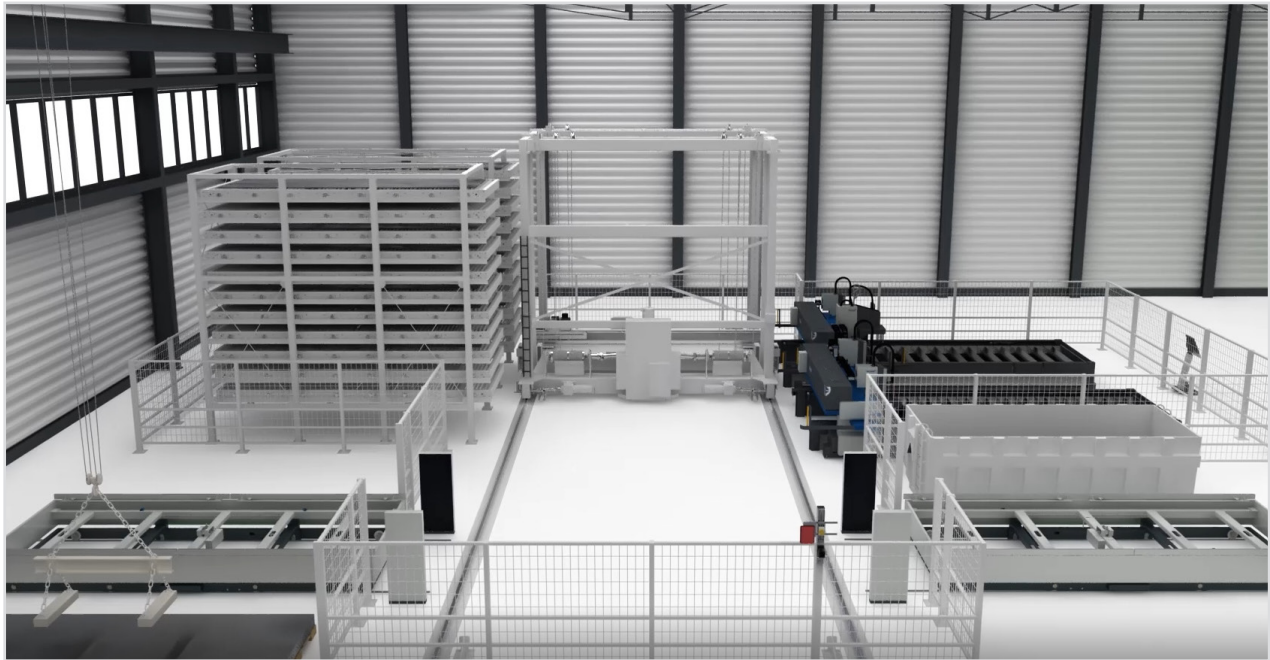


- + Your production orders are available everywhere without paper.
- + Filter and sort according to your priorities.
- + Choose whether to plan your orders manually or automatically.

GET ALL JOBS TO THE RIGHT MACHINE AT THE RIGHT TIME



- + Plan more effectively.
- + Avoid errors through paperless processes.
- + Get up-to-date overviews of production times and utilization.



PRODUCTION AUTOMATION

Material Flow

Material Flow is the module that connects to a material handling system comprised of material loading and unloading stations, towers, and material transportation devices like pallets and lifters, automating the movement of material.

This integration allows the module to know exactly which jobs are scheduled for a machine at any point in time. This provides your operators with an overview of the planned jobs including the material needed, along with the correct plates for feeding into the system.

The material will be optionally stored, then moved to the cutting machines and eventually to unloading stations according to schedule. Material Flow helps to configure jobs completely with all required information in advance so that the machine can start production cutting automatically.

Integrating with other OmniFab modules, Material Flow reports actual production data back to your connected ERP systems.

AUTOMATE YOUR MACHINES AND MATERIAL HANDLING SYSTEMS

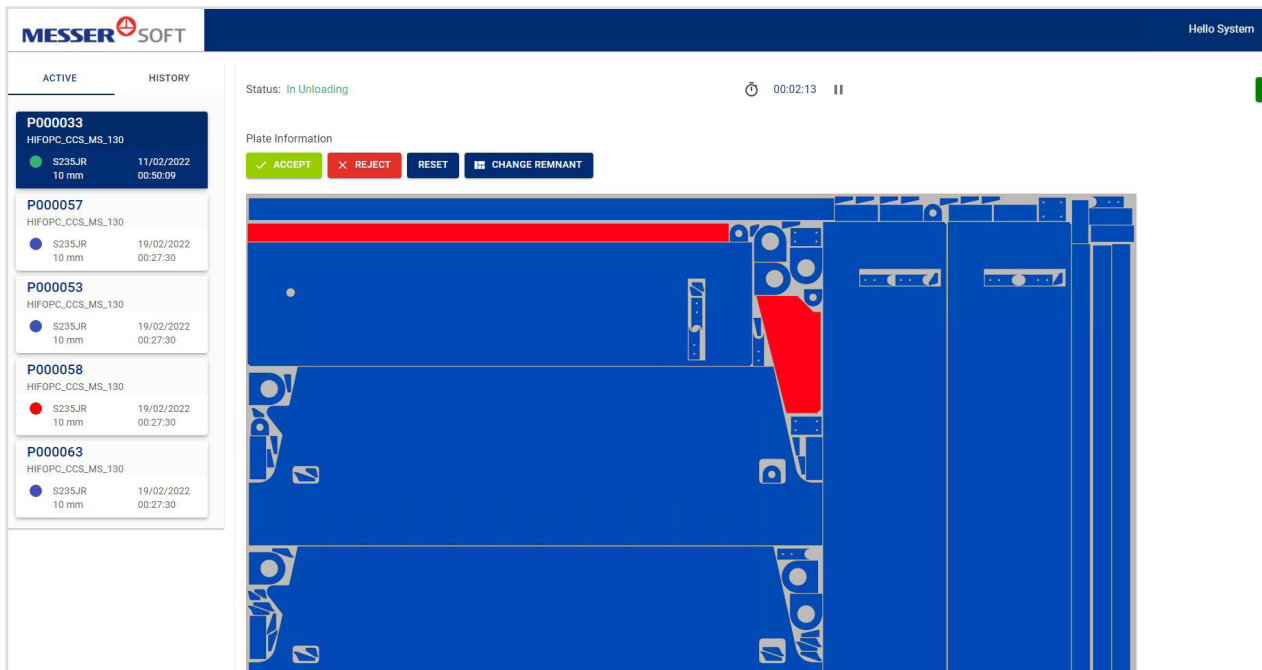


- + Control your material loading and unloading stations, storage towers, and material handling units with pallets and lifts.
- + Configure jobs fully in advance with all required information.

SAVE TIME AND RESOURCES WITH AUTOMATED PROCESSES



- + Maximize your machine utilization.
- + Win production results including residual plate geometries in real-time.
- + Utilize data on production, loading, and unloading times for analysis.



CONTROL PRODUCTION

Production Data Capture

The OmniFab Production Data Capture (PDC) module integrates into the machine's Global Control. It runs on all internet-ready connected devices such as tablets and smartphones. With OmniFab PDC, you generate complete, real-time reliable data for production control.

Machine operators use OmniFab PDC to record setup, production, loading and unloading times, number of parts produced, and scrap. This provides real-time transparency and traceability throughout the production process.

Once the operator has completed a job, the production information is displayed directly in Job Management. If problems occur during production, the operator can send a message to the production planning department so that they can react immediately and reschedule or re-nest the jobs.

For all completed jobs, the OmniFab Production Data Review screen provides an overview of all reported production data, allowing you to control and adjust production results to ensure that you always have reliable data in your system.

KEEP TRACK OF YOUR CURRENT PRODUCTION DATA

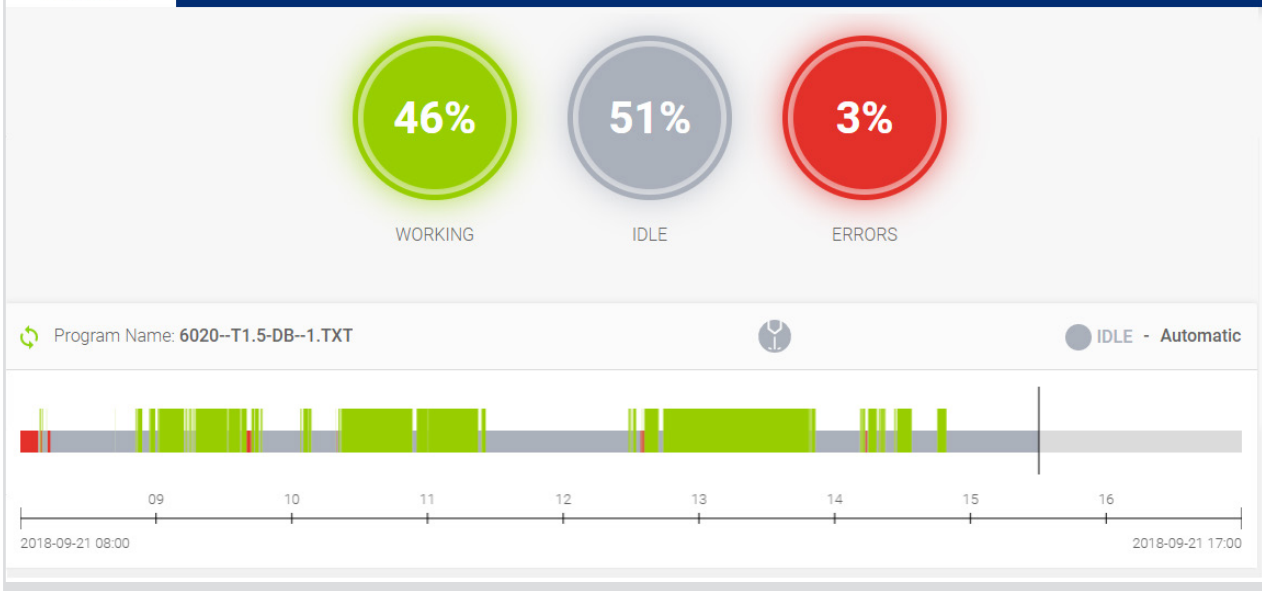


- + Experience real-time production feedback for disruptions and problems, missing material, wearing parts, errors in the nesting plan, and other critical operational metrics.
- + Record set-up and production times, loading and unloading duration, which components were manufactured, and which materials were used.

ENSURE MAXIMUM FLEXIBILITY IN YOUR PRODUCTION



- + Be where you need to be and keep track with mobile devices.
- + Control all data and react quickly to changes.
- + Ensure transparency and traceability.



MONITOR MACHINES IN REAL TIME

Machine Insight

OmniFab Machine Insight provides you with important information about your cutting machines in real-time during operation. Real-time machine monitoring provides you with operational data and the status of each connected machine.

Graphic illustrations show the machine utilization and cause for any downtime over customizable periods of time (days, weeks, months). In addition to downtime, you are also provided data for working time, idle time, and any errors throughout the cutting process, giving you all of the important information about the program that is currently cutting on the machine.

Machine Insight provides a graphical representation of the workload within the last eight hours by job number, including any stoppages that have occurred on the machine.

The times used for the various processes such as cutting, positioning, piercing, and preheating are clearly displayed, including process duration per shift. All of this data allows you to gain insight into the utilization of the machines, the cause of any downtimes, and the accumulation of any errors during those periods.

OBSERVE WHAT'S RUNNING IN PRODUCTION AT ANY TIME

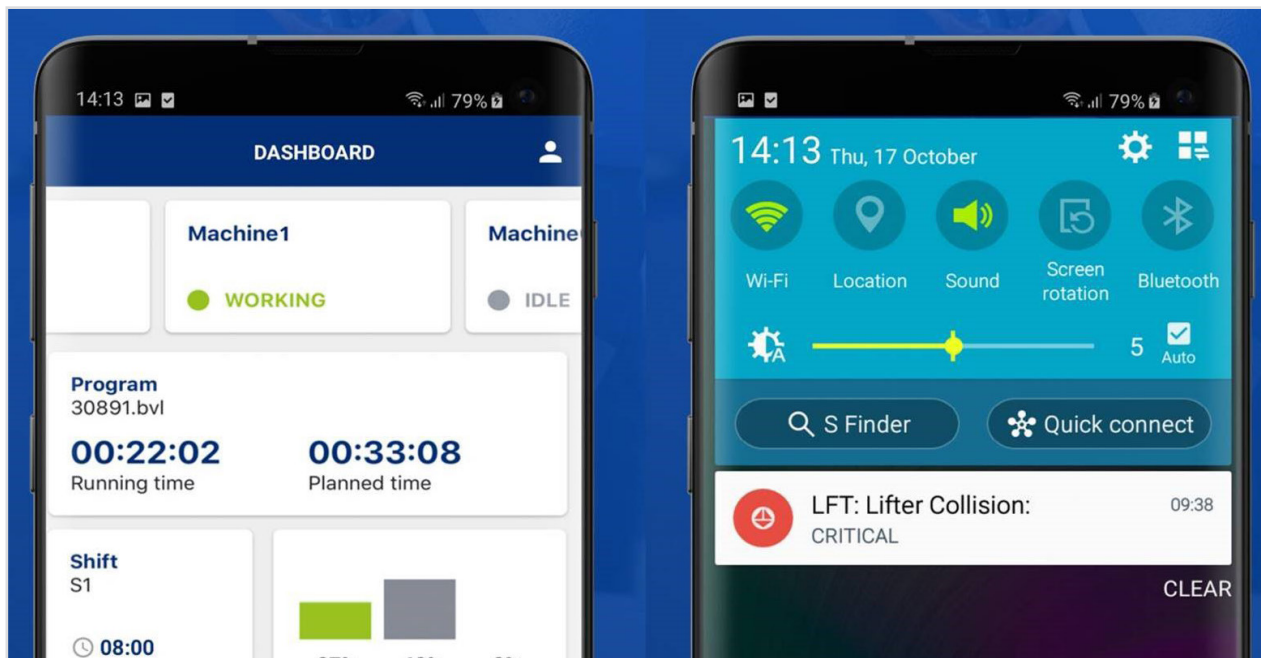


- + Use the real-time data of your machines as important "raw materials".
- + Recognize the actual utilization and sources of error of the machines.
- + Use configurable, meaningful charts and graphics to optimize your processes.

RECOGNIZE AND AVOID ERRORS AT AN EARLY STAGE



- + Introduce effective troubleshooting measures at an early stage.
- + Optimize your production with the help of machine monitoring and machine utilization.
- + Get a quick overview with the help of the graphic functionalities.



MONITOR MACHINES IN REAL TIME

Machine Insight

By recording operational status durations, you gain better data and insight for planning production. Important information about the machines and the current utilization can be displayed via an app for mobile devices such as smartphones or tablets. This means you are always connected and always kept up-to-date, even when you are on the go.

The job reports show you when a job was started, when it was stopped, how much time was scheduled for the job, and how much time was actually required for completion.

Jobs with the largest deviations between planned and required time are clearly identified and can be reviewed and optimized.

Generate reports based on days or weeks in PDF format. Thanks to the compact presentation of the reports, you can easily keep track of multiple machines. Additional functions in the software make it easier to recognize patterns in the event of anomalies in the data, allowing you to initiate any necessary measures earlier in the process.

KEEP AN EYE ON THINGS
WHEN YOU'RE OUT AND
ABOUT



- + Use the mobile application on your smartphone or tablet to constantly monitor production.
- + Create reports as PDF according to your requirements.
- + Gain contextual information from the machine data.

MINIMIZE DISRUPTIONS AND
PROBLEMS



- + Keep an overview even with a large number of machines.
- + Recognize patterns and anomalies.
- + Optimize your order and resource planning.



CREATING SOLUTIONS BEYOND MACHINES

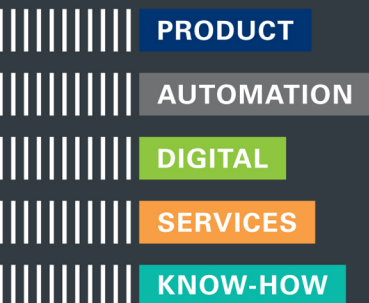
What we stand for

Messer Cutting Systems is a global supplier of cutting-edge technology for the metalworking industry.

Our portfolio is built on the pillars of PRODUCT, AUTOMATION, DIGITAL, SERVICES, and KNOW-HOW. With over 900 employees worldwide in over 50 countries, we maintain a constant dialogue with our customers. Through these partnerships, we achieve customer-oriented innovation and focus on “creating solutions beyond machines”.

We deliver not just modern cutting systems and solutions for plasma, laser, and oxyfuel technology, but appropriate services, training, our own software applications, and the integration of solutions from our technology partners in the field of automation. A network encompassing the machine, providing total solutions.

Our know-how combined with our customer-oriented attitude and actions have made us the worldwide partner of choice, delivering innovative solutions to the plate processing industry for over 120 years.



Messer Cutting Systems, Inc.

W141 N9427 Fountain Boulevard
Menomonee Falls, WI 53051

Tel. +1 262-255-5520

Fax +1 262-255-5170

Email sales.us@messer-cutting.com

Messer Cutting Systems reserves the right to make changes in equipment or specifications at any time without notice. Windows is a registered trademark of Microsoft Corporation. Slagger is a registered trademark of Missouri Valley Steel, a division of Owen Industries.

© 2023 Messer Cutting Systems.

messer-cutting.com

