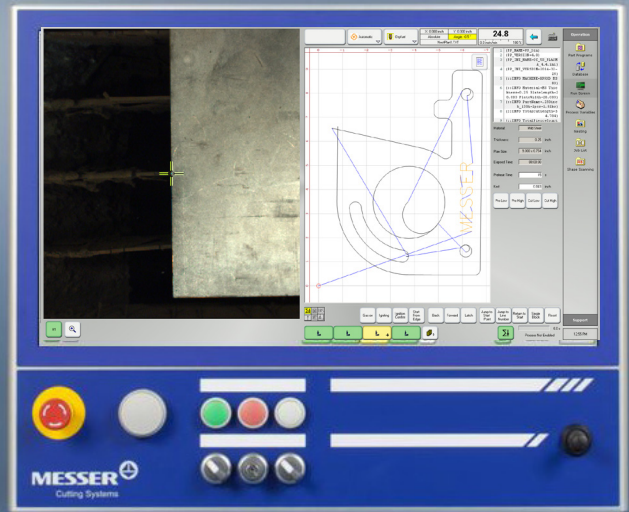


GLOBAL CONTROL^{Plus}

Intelligent, feature-rich interface.

PRODUCT



Messer's Global Control^{Plus} **ADVANCED TECHNOLOGY**, **HIGH RELIABILITY**, and **EASY TO USE**.

FEATURES AND BENEFITS:

- + Multiple process databases make every operator an expert.
- + Modern graphical interface minimizes the learning curve.
- + Industrial CNC computer with integrated PLC and motion control eliminates expensive proprietary cards while providing high performance and reliability.
- + Ethernet-based I/O system (EtherCAT) provides real-time updates with minimal cables.
- + Minimizes downtime with using Virtual Service™ remote diagnostic software.
- + True shape nesting and direct import of CAD files allow parts to be cut quickly with minimal scrap.
- + Over 50+ standard shapes includes custom shapes can be added by the end-user.
- + An eight position joystick and feed rate override dial.
- + Backup Tool keeps a copy of the hard drive to minimize downtime due to virus activity, malware, etc.

OPTIONAL FEATURES

- + Machine Insight provides real time production monitoring and reporting of critical key performance indicators.
- + Video camera(s) for alignment and process viewing.

SYSTEM DESCRIPTION

Messer Cutting Systems Global Control^{Plus} has an easy to use interface with on-board material database, allowing for quick set-up and high quality cut parts. An extensive custom shape library, multiple process databases, CAD import, true-shape nesting, productivity monitoring and remote diagnostics features packaged in the industry's only IP65 rated enclosure. Easy to learn functions make any operator an expert.

APPLICATION

Available on the MetalMaster Xcel, Titan III, MPC2000, MPC2000 MC, TMC4500 DB, SicoMat, and LaserMat II.

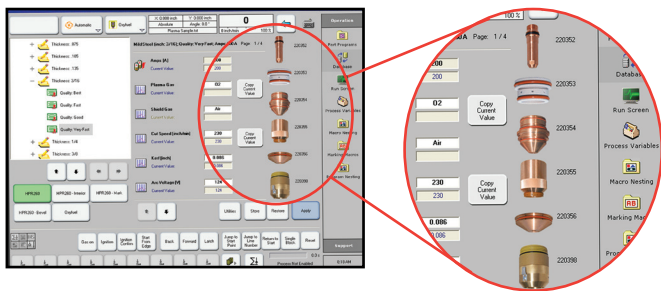
More information on back.

GLOBAL CONTROL **PLUS** TECHNICAL GUIDE

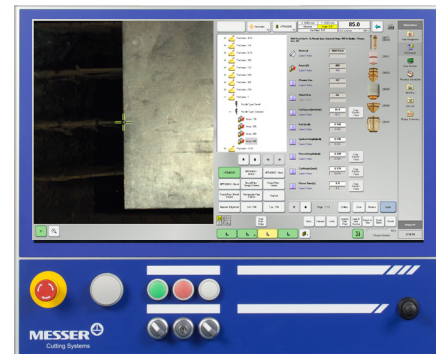
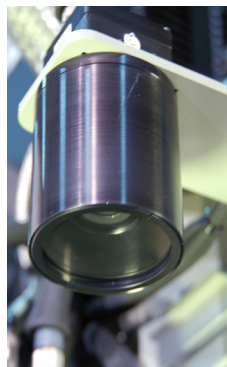
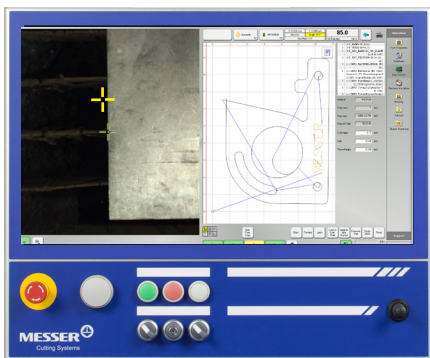
PRODUCT

Technical Data

Operating System	MS Windows® 10 IoT Enterprise	Ethernet Network	Wireless or 10/100/1000Mbps
Display	24" LED Touch Screen	Ambient Temperature	32°F - 122°F (0°C - 5°)
Processor	≥ Intel® Core™ i7, 4 Cores	Protection	UPS Battery Pack, Anti-Virus, Disk Damage
Memory / Storage	≥ 4GB DDR-RAM Solid-state disk, SSD, 2.5" 120 GB	Inputs / Outputs	Over 100,000 I/O via real-time EtherCat Bus System
Environment	IPG (No ingress of dust or water)	USB Ports	One (1) USB Ports



Cutting parameter database (plasma /oxyfuel) with display of consumables makes process set-up quick and error-free.



High strength machined aluminum enclosure. Sealed switches and industrial touchscreen.

Video camera (right) allows for fast, accurate plate alignment.