

GLOBAL CONTROL^S

Intelligent, feature rich interface.

DIGITAL



GLOBAL CONTROL^S ADVANCED TECHNOLOGY, HIGH RELIABILITY, EASY TO USE, AND COMPACT.

Our exclusive CNC control includes expertise gained from thousands of machine installations around the world. An extensive custom shape library, multiple process databases, CAD import, true-shape nesting, productivity monitoring and remote diagnostics are just some of the key features packaged in the industry's only IP65 rated enclosure. Easy to learn functions makes any operator an expert.

FEATURES AND BENEFITS

- + Multiple process databases make every operator an expert.
- + Modern graphical interface minimizes the learning curve.
- + Industrial CNC computer with integrated PLC and motion control eliminates expensive proprietary cards while providing high performance and reliability.
- + Ethernet-based I/O system (EtherCAT) provides real-time updates with minimal cables.
- + Downtime is minimized operators can be easily trained using our Virtual Service remote diagnostic software.

- + True shape nesting and direct import of CAD files allow parts to be cut quickly with minimal scrap right from the control.
- + Over 50+ shapes come standard and additional custom shapes can be created by the user.
- + Backup Tool keeps a copy of the hard drive to minimize downtime.

OPTIONAL FEATURES

- + Machine Insight provides real time production monitoring and reporting of critical key performance indicators.
- + Video camera(s) can be used as alignment tool and for process viewing.



Sealed switches and industrial touchscreen.

More technical information on back.

TECHNICAL GUIDE

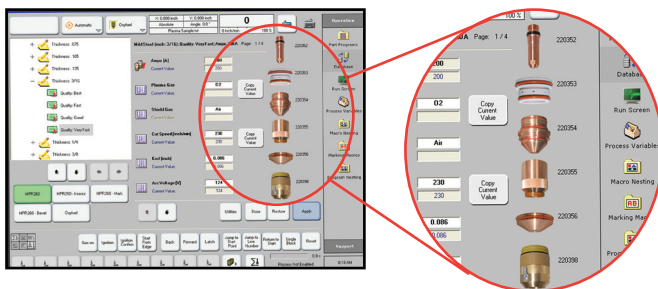
Global Control^S

DIGITAL

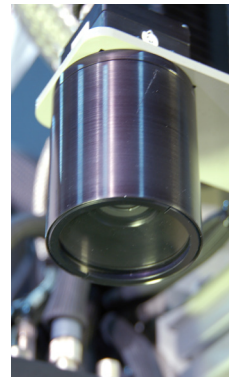
Display	15" LED Color Touch Screen
Hard Drive	≥ 2 GB DDR4-RAM ≥ 2.5", 320GB SATA Hard Drive
Processor	≥ Intel® 2.2 GHz, 2 Cores
Operating System	Microsoft Windows 10
Ethernet Network	Wireless or 10/100/1000 Mbps
Environment	IP65 (No ingress of dust or water)
Inputs/Outputs	EtherCAT Bus System Over 1000,000 I/O via real-time
USB Ports	Two (2) USB Ports
Ambient Temperature	32°F - 122°C F (0°C -50°)
Protection	UPS Battery Pack, Anti-Virus, Disk Image

APPLICATIONS

Featured on EdgeMax, MetalMaster Evolution and PlateMaster II machine models.



Cutting parameter database (plasma /oxyfuel) with display of consumables makes process set-up quick and error-free.



Video camera featured (right) allows for fast, accurate plate alignment.